

WP601

GSM Based Fixed Wireless Phone

User Manual



Model: WP601

Ver 1.0



LINKTOP 凌拓

Read this Manual Carefully
before Attempting to Repair the Instrument.

Contents

1. GENERAL INFORMATION	1
1.1 PREFACE.....	1
1.2 SAFETY PRECAUTIONS	1
2. GETTING STARTED	2
2.1 CHECKING THE PACKAGE	2
2.2 TECHNICAL PARAMETERS.....	2
2.3 TURNING PHONE'S POWER ON/OFF	2
2.4 APPEARANCE.....	3
2.4.1 KEY INSTRUCTIONS	4
2.5 INSTALLATION.....	6
2.5.1 HANDSET.....	6
2.5.2 ANTENNA.....	6
2.5.3 EXTERNAL POWER ADAPTER	7
2.5.4 DATA PORT	7
2.5.5 CABLE	7
3. SERVICE INDICATION	8
3.1 FULL SERVICE.....	8
3.2 NO SERVICE.....	8
3.3 LIMITED SERVICE.....	8
4. BASIC FUNCTION	9
4.1 GETTING START.....	9
4.2 EDIT PHONE NUMBER.....	9
4.3 MAKING A CALL.....	10
4.3.1 DIAL THE FIXED PHONE EXTENSION NUMBER	10
4.3.2 DIAL A CALL.....	10
4.3.3 DIAL A INTERNATIONAL CALL.....	10
4.3.4 DIAL FROM PHONE BOOK.....	10
4.3.5 REDIAL	10
4.3.6 SPEED DIAL	10

4.3.7	MAKING A THREE-PARTY CALL	11
4.3.8	EMERGENCY CALL	11
4.4	OPERATION OF INCOMING CALL	11
4.4.1	RECEIVE AN INCOMING CALL	11
4.4.2	REJECT AN INCOMING CALL	11
4.5	CONVERSATION.....	11
4.5.1	PHONE VOLUME ADJUSTMENT	11
4.5.2	END A CALL	12
4.6	HANDS FREE FUNCTION.....	12
4.7	OTHER OPTIONS.....	12
4.7.1	DIALED PHONE NUMBER	12
4.7.2	RECEIVED PHONE NUMBER	12
4.7.3	RECEIVED SMS	12
4.7.4	WRITING SMS	12
5.	FUNCTION MENU	13
5.1	INPUT METHOD.....	15
5.1.1	INPUT OF SPECIAL CHAR	15
5.1.2	INPUT MODE	15
5.2	MENU FUNCTION	16
5.2.1	PHONE BOOK	17
5.2.2	RECENT CALLS	20
5.2.3	SERVICE MESSAGE	21
5.2.4	DIVERT CALLS	25
5.2.5	CLOCK.....	25
5.2.6	CALCULATOR	26
5.2.7	AUDIO.....	26
5.2.8	SETTING	26
6.	USB DRIVER INSTALLATION	30
7.	GPRS	31
APPENDIX I:	COMMON TROUBLESHOOTING	41

1. GENERAL INFORMATION

1.1 PREFACE

Thank you for using WP601 GSM fixed wireless phone. To guarantee your phone is always in its best condition, please follow the instructions in this manual.

1.2 SAFETY PRECAUTIONS

- Keep the phone away from water and damp areas. Water or other liquids may cause overheating, electrical leakage, and failure of the phone.
- Do not try to disassemble the phone. This can cause electric shock and failure of the phone. Tampering will also void the phone's warranty.
- Put the phone in a safe and stable place.
- Keep away from dust and heat radiation (i.e. microwaves, stoves, etc.) Try to use the phone away from ordinary telephones, television sets, radios, and automated office equipment to avoid interference between the devices.
- Use clean soft dry cloth to wipe the phone. Do not use any chemical agents.
- Do not put the phone near explosive or inflammable materials.
- Use the phone only within the temperature range of -20°C~60°C and humidity range of 0%~95%.

2. GETTING STARTED

2.1 CHECKING THE PACKAGE

Please check all the parts shown below and make sure no piece is missing or broken. (The appearance of the parts in your package may be different from those in this manual.)



Main Unit (1)



Handset (1)



Handset Cord (1)



External power adapter (1)




Antenna (1)

2.2 TECHNICAL PARAMETERS

- Frequency range:
 - 900 MHz
 - 1800MHz
 - 900/1800MHz
- LCD display: Large dot matrix LCD / dialing number / dialing time / status / time / CID / signal strength / battery grade / short message indicator.
- External interfaces: External power socket
- Power supply: AC 90V-300V

2.3 TURNING PHONE'S POWER ON/OFF

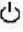
After installing the handset correctly, turn on the power toggle switch to "ON" which located at the right side of the phone's rear panel first and then press the  key (the power key) which is on the right of the front panel for


about 3 seconds, the phone will then automatically test whether the SIM Card is inserted and valid. Wait for the antenna icon to display indicator bars before you make a call.

When the battery icon is empty, connect the external power adapter's barrel connector to the external power input on back panel of unit.

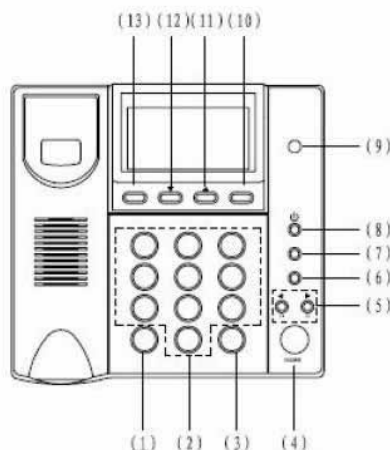
Plug the external power adapter into the power socket. The unit will power up automatically.

Check the cellular signal strength and move the unit until the best signal possible is achieved.

In state of power-on, press and hold button  key, LCD screen closes or turn off the power toggle switch to "OFF" directly.

 NOTE	When using the phone for the first time, charge it for over 6 hours to ensure optimum battery charge.
---	---

2.4 APPEARANCE



2.4.1 Key Instructions

(1) * key

- In idle or dialling mode, press this key to input corresponding digital.
- When input method invoked, press this key to input special char

(2) 0~9 number keys

- In idle or dialling mode, press these keys to input the phone number.
- When input method invoked, press these keys to input corresponding char.

(3) # key

- In idle or dialling mode, press this key to input corresponding digital, press and hold this key to input Pause signal.
- When input method invoked, press this key to swap to another method.

(4) HANDS-FREE key

- If you are using the handset to call and you want to transfer the call to the speakerphone. Press the HANDS-FREE button and hang up the receiver to transfer the call to the speakerphone.

(5) V- and V+

- Press to to adjust the volume when in calling mode.
- Press to move the cursor left and right when entering letters.
- Press V+ key to operate on the selected phone number in phone book/view menu ;
- Press V+ key can operate some function to control the call when phone is in called.
- Press V- to enter Inbox immediately in idle mode
- Press V+ to enter New Message immediately in idle mode

(6) Call key

- Press to make a call after dialling the desired number

(7) Redial key

- Press this key In idle or dialling mode to call the last dialled number.

(8)  key

- Switch on/off the phone.

(9) Charge LED

- Indicate the status of charging

(10) NAMES/EXIT key

- The function of this key varies according to the word displayed on the right lower corner of the screen.
- Press this key to return to upper level of the menu system or hands off status.
- In edit mode, press this **key** to delete the char before the cursor, press and hold this key to delete all chars input before the cursor.
- In idle mode, press this key for 2 seconds, then press '#' to lock the keypad. Press this key and '#' to unlock the keypad

(11)  key

- Press this key page up in menu
- Press this key to move up the cursor in edit or view status
- Press this key to look up the dialled phone number in idle mode

(12)  key

- Press this key page down in menu
- Press this key to move down the cursor in edit or view status
- Press this key to look up the received phone number in idle mode

(13) MENU/SELECT key

- The function of this key varies according to the word displayed on the left lower corner of the screen.
- In idle mode, press the key to enter the main menu. In menu, press this key to enter submenu or operation interface.
- Press this key to confirm in edit mode.
- In idle mode and dialling mode, after the phone number input, presses this key to dial out.

2.5 INSTALLATION

2.5.1 Handset

Connect the main unit and the handset with the handset cord; plug the cord into the handset socket on the left side of the main unit.

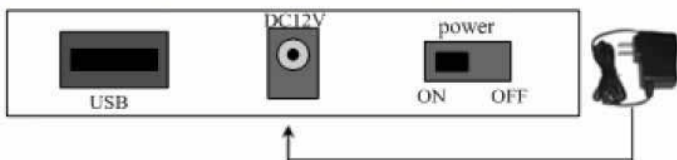
2.5.2 Antenna

Install the antenna to the antenna connector. Hold the plastic portion of the antenna and turn the metal screw clock-wise.



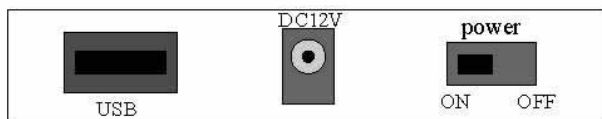
2.5.3 External Power Adapter

Plug the external power adapter into an appropriate wall outlet.



2.5.4 Data Port

DATA port is only used for upgrading the firmware and GPRS.



2.5.5 Cable

Insert the corresponding side of this cable into the USB ports, and connect another side to PC.



3. SERVICE INDICATION

3.1 FULL SERVICE

When powered on, the service provider's name will be displayed on the LCD. If service is available, the antenna icon will display signal strength indicator bars.

3.2 NO SERVICE


When no service is available, the antenna icon will not display any indicator bars. Contact your service provider to verify cellular service is activated in your area. No call can be made using the phone in this condition.

3.3 LIMITED SERVICE

If there is a signal, but full service with the system is blocked, only emergency calls will be allowed. Contact your service provider for more information.

4、BASIC FUNCTION

4.1 GETTING START

Ensure the phone is switched on and the valid SIM card is inserted before starting up. Start the phone by pressing  key for 3 seconds. When operator name appears on the screen, the phone is in service.

If no SIM card inserted but power on, the notification of “Insertion SIM card” will be prompted. After the insertion of SIM card, the validity of SIM card will be verified.

Then follows the prompt:

If the phone password is set to “open”, “emergency call only” will prompt, press the NAMES/EXIT to unlock, “input phone password” will be prompt. After the right password (default to “1234”) is input, press the MENU/SELECT to confirm. “Searching network” will prompt till the phone connects to network. If the phone is in service, the operator name will be displayed.



WARNING

Please switch off the phone before taking the SIM card out. SIM card may be damaged if it is inserted or taken out when the phone is running. To avoid message loss or error, you should not touch the mental panel area of the SIM card and place it far from electrical or magnetic field. The phone can't get services if the SIM card is damaged.

4.2 EDIT PHONE NUMBER

In idle and dialing mode, input the phone number to dial, press the ▲/▼ or V+/- key to move the cursor to left or right, press the NAMES/EXIT key to delete the digits before the cursor. Press and hold the NAMES/EXIT key for a while to clear the input phone number before the cursor.

4.3 MAKING A CALL

4.3.1 Dial the Fixed Phone Extension Number

Some fixed phone extension can't be called directly, it need a phone exchange. If you input the pause character 'P' between the exchange phone number and extension number, the phone will finish the dial procedure, connect to the extension. To get the "P", press and hold the "#" key for a while till the "P" displayed on the phone screen.

4.3.2 Dial a Call

In dialing mode, input the phone number, then press the MENU/SELECT key or call key or wait for the auto-dial delay.

4.3.3 Dial a International Call

Press the "*" key till the char '+' displayed on the phone screen.

Input the country code and the phone number after the prefix.

4.3.4 Dial from Phone Book

Press NAMES/EXIT key to get into the phone book. Press the ▲ or ▼ key to scroll the list to search the caller's name. Press the MENU/SELECT key to see the phone number, then press the MENU/SELECT key to dial. In hang up status, if you select a phone number and press the MENU/SELECT key the phone will change to hand free status and the number will be dialed.

4.3.5 Redial

Press the Redial key to call the last dialed number

4.3.6 Speed Dial

Press 0-9 keys for a while, the phone number stored in speed dial list will be sent out. Make sure the speed dial key has been set up.

To fixed a number to a shortcut key, please enter the phone-book, select one phone number and press V+ to open the option menu. Then select

'Add to speed', choose one position and press MENU/SELECT key to fix it.

4.3.7 Making a Three-Party Call

When two parties are talking, the originating party can dial the third party without hanging up the current call. If the originating party ends the call, all the calls end; otherwise, two-party talking continues.

4.3.8 Emergency Call

1. Make sure the phone is switched on and in services.
2. Pick up the handset or press the hand free key.
3. Input the emergency number, then press MENU/SELECT or press Call key or wait for the auto-dial delay.
4. Notify your location. Please don't end the conversation before permission.

4.4 OPERATION OF INCOMING CALL

In idle mode, when call is incoming, the ring tone will alert, and the caller ID will display on the screen. If the call is not answered, "Missed call" will display on the screen, you can press the MENU/SELECT key to enquiry the missed call.

4.4.1 Receive an Incoming Call

Pick up the phone or Press the hand free key to receive the incoming call.

4.4.2 Reject an Incoming Call

Press the NAMES/EXIT key to reject the incoming call.

4.5 CONVERSATION

4.5.1 Phone volume adjustment

7 levels of volume and mute can be set in conversation. Press the V+ key to add the volume, press the V- key to subtract the volume.

4.5.2 End a Call

Press NAMES/EXIT key or hang up the handset to end the current call.

In hands free mode, press the Handfree key to end the current call.

4.6 HANDS FREE FUNCTION

In idle mode, press the Handfree key to enter hand free mode, the dial tone will be heard and the “please dial” will be displayed.

4.7 OTHER OPTIONS

4.7.1 Dialed Phone Number

In idle mode, press the ▲ key to see the dialed phone number

4.7.2 Received Phone Number

In idle mode, press the ▼ key to see the received phone number

4.7.3 Received SMS

In idle mode, press V- key to enter Inbox of SMS

4.7.4 Writing SMS

In idle mode, press V+ key to enter new message box.

5. FUNCTION MENU

Menu Tree

1. Phonebook
 - 1.1 View names
 - 1.2 Add new name
 - 1.3 Settings
 - 1.4 Speed dial
2. Recent calls
 - 2.1 All calls
 - 2.2 Missed calls
 - 2.3 Received calls
 - 2.4 Dialed numbers
 - 2.5 Call Info
3. Service Messages
 - 3.1 New Message
 - 3.2 InBox
 - 3.3 SentBox
 - 3.4 OutBox
 - 3.5 DraftBox
 - 3.6 Message setting
 - 3.7 Voicemail
 - 3.8 Template

4. Divert calls

- 4.1 Divert all calls
- 4.2 Divert when busy
- 4.3 Divert on no answer
- 4.4 Divert when not found
- 4.5 Cancel all

5. Clock

- 5.1 Alarm
- 5.2 Set time
- 5.3 Set data

6. Calculator

7. Audio

- 7.1 Ringing tone
- 7.2 Ringing volume
- 7.3 Earpiece
- 7.4 Keypad tones
- 7.5 Warning tones
- 7.6 DTMF tones
- 7.7 Any key

8. Settings

- 8.1 User Settings
- 8.2 Call Settings
- 8.3 Security

5.1 INPUT METHOD

5.1.1 Input of Special Char

In English input mode, the following character can be input by pressing “1” once or more

Special char table1

.	,	:	;	/	-	_	@	&	?	!	'	”
---	---	---	---	---	---	---	---	---	---	---	---	---

In English input mode, the following character can be input by pressing “*” once or more

Special char table 2

*	+	/	()	<	=	>	%	£	\$	¥	□	@	&	§
---	---	---	---	---	---	---	---	---	---	----	---	---	---	---	---

Press the “0” to input space

5.1.2 Input Mode

The following are the input methods used in the phone:

Prompt	Mode of Input Method	Purpose
ABC	Uppercase of English	Input the uppercase of English
Abc	Lowercase of English	Input the lowercase of English
123	Digital	input digital

Press ‘#’ to swap between the three input modes when inputting char.

Press the NAMES/EXIT key to delete the char before the cursor.

The number of input chars and the number of chars which can be accepted will be displayed at the first line, the input method mode will be displayed on the right up corner.

Application scene for input method: name in phone book, short message edit.

5.1.2.1 English Input Mode (include Uppercase & Lowercase)

Key pressed	(ABC)	(abc)
	Uppercase	Lowercase
1	See details of "special char table 1" below	
2	A B C Ä Å Æ à Ç	A b c ä å æ à ç
3	D E F è É	D e f é è
4	G H I I	G h i i
5	J K L	j k l
6	M N O Ñ Ö Ø ò	m n o ñ ö ø ò
7	P Q R S ß	P q r s ß
8	T U V Ü ü	t u v ü ü
9	W X Y Z	W x y z
0	input space	
*	See details of "special char table 2" below	
#	Switch the input mode when edit	

5.1.2.2 Digital Input Mode

Press digital key to input


5.2 MENU FUNCTION

General definition and operation:

Function of MENU/SELECT key is prompted by the words on the left-bottom corner of the screen.

Function of the NAMES/EXIT key is prompted by the words on the right-bottom corner of the screen.

In idle mode, press MENU/SELECT key to enter the main menu, press ▲/▼ key to scroll the menu. The slide bar on the right of the screen will show the position of this function in this menu. Press MENU/SELECT key to start the function, press NAMES/EXIT key to quit to upper level of the menu system.

 NOTE	All operation on menu done in idle mode.
---	--

5.2.1 Phone book

Some personal information such as name, group phone number and so on will be stored in the phone book.

Choose phone book item of the main menu and press MENU/SELECT, the phone book menu will start.

5.2.1.1 View names

Press ▲/▼ key to browse the items, press MENU/SELECT to enter.

The list of name and phone number will be displayed.

- ◆ Press ▲/▼ key to browse and press MENU/SELECT to watch the phone number, press MENU/SELECT key again to call the people you have selected.
- ◆ Select one contact and press V+ key to enter the sub menu, and you can do operations such as **Edit, Delete, Send message**.

Edit:

Edit phone number, and phone number type.

Delete:

Delete the phone number.

Send message:

Message editor started. After edit, press **MENU/SELECT** key, the message will be sent to the current selected phone number.

- ◆ If you select a contact but not press **MENU/SELECT** again, press the **V+** key to operate the contact list. Also the operations include **Search, Edit, Delete, Add new name, Add to group**

Search:

Input the name to search.

Edit:

Edit name, phone number, group and phone number type

Delete:

Delete the phone number.

Add new name:

Add a new contact

Add to group :

Put the current phone number to groups (no group\ family \friends \business \useful\VIP\leisure).

5.2.1.2 Add new name

Press the **▲/▼** key to scroll the menu item till to find the “**add new name**” item. Press **MENU/SELECT** to enter.

If you choose the “**choice**” in the “**phone book/setting/ save nos. to**” menu before, the selection of “**sim card**” and “**phone**” will appear when you enter the “**Add new name**” menu, otherwise the choice in the “**save nos. to**” menu will be used.

There are three items in this menu, “**Enter name**”, “**set group**”, “**number**” respectively.

Not all items are necessary, user can choose the input item, but name and a number is need. The default phone type is mobile.

- ◆ “name”---name corresponding to the phone
- ◆ “group”---no group\family \ friends \ business \useful\VIP\leisure
- ◆ “phone number”---there are three phone numbers that can be stored in an item.

5.2.1.3 Setting

Press the ▲/ ▼ key to scroll the menu item till to find the “settings” item. Press **MENU/SELECT** to enter.

There are four items in this menu, “Edit Groups”, “ Save nos. to”, “Used space” respectively. Press ▲/ ▼ key to view, press **MENU/SELECT** to enter.

1. There are two items in the “Edit groups” submenu, “Groups Filter” and “Grouped ring tones”.
 - in the filter menu, multi-select the groups. Those with bitmap will not be searched in view of phone book; on the other hand, those with bitmap will be searched. Press the **MENU/SELECT** to swap between and , press **NAMES/EXIT** to quit.
 - in “grouped ring tones” menu, different alert tone can be set to calls in different groups to make you know the group of the call. The groups name can be altered to your specified.
2. There are three items in “ save nos. to “ menu, “choice”\”phone memory”\”sim card” respectively. If you want the new phone be added to sim card select the “sim card” item here, if you want the new phone be added to phone memory, select the “phone memory” item here, and if you make selection later, select the “choice” item.

3. In "used space" menu, the number of the phone number stored in SIM card and phone memory can be viewed, also the leave space can be view. The capacity of the SIM card is various; the maximum number of the phone number for storage is 200.

5.2.1.4 Speed dial

You can view and on the speed dial status in this menu.

Ten phone numbers can be set, corresponding to the digital key. After setting, press 0---9 for 2 seconds to dial out the corresponding phone.

5.2.2 Recent calls

The call records stores the last ten **missed \received \dialed calls**.

In the calls submenu of the main menu, press **MENU/SELECT** to enter the calls menu. There are five items in calls menu, "all calls", "missed calls", "received calls", "dialed numbers", "call info" respectively. Press **▲/ ▼** key to scroll these items and press **MENU/SELECT** to enter the selected item.

All calls: list all calls

Missed calls: list missed calls

Received calls: list received calls


Dialed calls: list dialed calls

Call info:

There are three items in "call info" menu, "call costs" "call timers", "clear all logs".

1. There are five items in "call costs": "last call" "All calls" "Clear all logs" "Cost units" and "Max cost" respectively.
 - In "last call", the communication cost for the last call will be displayed.

- In “**All calls**”, the communication cost for the all calls will be displayed.
 - “**Clear all logs**” will clear all information in call logs.
 - There are two items in “**cost units**”: “**Readunits**” and “**Setunits**”. In “**Read units**”, you can look over the cost units. But “**Set units**” need PIN2 code input.
 - There are two items in “**Max cost**” : “**Readlimit**” and “**Set limit**”. In “**Read limit**”, you can look over the Max cost . But “**Set limit**” need PIN2 code input.
2. There are two items in “**call timers**”: “**last call**” and “**all calls**”.
- In “last call”, the communication time for the last call will be displayed.
 - In “all calls”, the communication time for all calls will be displayed.
3. In “**Clear all logs**”, if you press “yes”, the information for the calls will be clear.

 NOTE	<p>Some operations need PIN2 code input. To get the code, please contact the network service supplier.</p>
---	--

5.2.3 Service Message

The phone can send and receive only **English** short message.

In idle mode, press **MENU/SELECT** to access the message menu. There are eight items in this menu, “**NewMessage**”, “**InBox**”, “**SentBox**”, “**OutBox**”, “**DraftBox**”, “**Messagesettings**”, “**Voicemail**”, “**Template**”. Pre-ss **▲/▼** key to scroll and **MENU/SELECT** to enter.

5.2.3.1 New Message

Make sure the SMS center has been set before you send the short message. The maximum number of characters that can be input is 198.

Press the **MENU/SELECT** to start writing message.

After editing, press “ok”. When inputting the receiver number, press the **select** key to pop up the filtered phone book, then you can select the phone number from the number list, also you can input the phone number directly.

Choose send, save or send and save (press select key) to operate on the message or send to many (press Call key to send out messages after inputting phone numbers).

5.2.3.2 InBox

- ◆ You can view the received message here, the message include receiving date & time \the sender's number\sender's name (if stored in phone book). When you received a message, there is an alert tone; also the “new message coming” will display on the screen. If you don't read immediately, the bitmap of short message will be showed on the first line of the screen, and the message will be stored in SIM card unless the space is full. If there is no room to store, you will see the bitmap of the short message on the screen.
- ◆ Press the MENU/SELECT to read the details of the message in message list. Then press the “options” key you can operate on the message:
 - Edit:** edit the message, then save or send or send to many or send and save or Template.
 - Delete:** delete the message
 - Text reply:** reply the sender by text.
 - Voice call:** reply the sender as voice call

Extract nos: save the sender number to phone book

5.2.3.3 SentBox

- ◆ You can view the sent message stored in SIM card.
- ◆ Press the MENU/SELECT to read the details of the message in message list. Then press the “options” key, you can do operations as shown in “InBox”.

5.2.3.4 OutBox

- ◆ You can view the messages that have not been read.
- ◆ Press the MENU/SELECT to read the details of the message in message list. Then press the “options” key you can do operations as shown in “InBox”.

5.2.3.5 DraftBox

- ◆ You can view the Draft message here.
- ◆ Press the MENU/SELECT to read the details of the message in message list. Then press the “options” key you can do operations as shown in “InBox”.


5.2.3.6 Message setting

1. Message center

Please contact the network service supplier to see and get the service center number.

2. Message life time

During the validation time of the short message, the service center will send the message repeatedly till it is received. This is applied to all sent message. The values are: **1hour, 2 hours, 6 hours, 1 day, 2 days, 1 week, 4 weeks, 6 months.**

 NOTE	It needs support of the network service supplier.
---	---

3. Delivery Status


Select **On** to open Delivery Status that when you send message succeed the LCD screen will be appear “send succeed” dialog box and Warning tone will be appeared.

4. Used Space

Indicate amount of maximum and messages stored in InBox (Max: 50), SentBox (Max: 10), OutBox (Max: 10) and DraftBox (Max: 10).

5.2.3.7 Voicemail

1. Before using voice mail box, please contact network service center to confirm that the service of voice mail box has been activated.
2. After your successful setting, network will automatically send messages to your phone.
3. Press **Menu/Select** key to enter Menu.
4. Select Voice Mail to read the message and dial voice mail number to listen to the recording voice message following guide prompt.

 NOTE	The function needs network support.
---	-------------------------------------

5.2.3.8 Template

There has a group of some common built-in phrases and sentences, such as, “Hello!”, “I am fine.” “How are you?” “I miss you!” etc.

When you edit messages, you can select it.

This function helps user to divert the incoming call to the specified phone number. To use the service, please contact the network service center.

The following are details of operation:

There are submenu under the call divert menu, “all calls”, “when busy”, “no answer”, “not found”, “cancel all”.

1. “All calls” divert any call
2. “When busy” divert when the phone busy
3. “No answer” divert when no answer
4. “Not found” divert when can't connect

You can switch **on /off** these conditions, check the status of these conditions, and choose the call type in the conditions submenu. The calls are divided as follows here: **all services, voice calls, data, fax, messages, all except msgs.**

5. “Cancel all” cancel all registered divert service

5.2.5 Clock

Three items in this menu:

Alarm Set Time, Set Data.

1. Alarm

Set time: Set the time for alarm. The default time is current time. If the alarm is valid once, make sure the time should be later than current time.

Set tone: set the alarm tone

Repeat off: if the alarm repeats every day

2. **Set Time:** set current time.
3. **Set Date:** set current date. Date format is DD/MM/YYYY

5.2.6 Calculator


Press **0---9** to input digital number

Press ****** repeatedly to input '+', '-', '**', '/'

Press **#** to input '.'

Press **NAMES/EXIT** key to clear the last input or result

Press **MENU/SELECT** key to get result

 NOTE	Bias error maybe exists in result, especially in division operation.
--	--

5.2.7 Audio

There are six items in this menu:

Ringing Tone : ten types can be chosen

Ringing Volume: 1---6, loudest, Off

Earpiece : 1---6, loudest, Off

Key Tones : 1---6, loudest, Off

DTMF Tones : open or close

Any key ans:

When any key except **NAMES/EXIT** key pressed, the call will be received when the setting is open. Otherwise, only dial key pressed the call will be received.

5.2.8 Setting

There are three items here: User settings, Call settings, Security.

5.2.8.1 User settings

Three items in this menu:

Contrast

Adjust the screen's contrast to make the screen look bright or dark.

Back light time

Available values are "5s" to "10s", press ▲/ ▼ key to adjust the time.

Back light

Turn on or turn off the back light


Auto Dial timer

Available values are "no", "1s", "2s", "3s", "4s", "5s", "6s", "7s", "8s", "9s".

5.2.8.2 Call settings

Three items here:

Call waiting: Allow an incoming call to wait to be answered while you are engaged in an earlier call. You can active or cancel the function.

 NOTE	Call Waiting requires network support.
---	--

Caller Number Status: Show caller number


Minute Mind : Switch ON or OFF the function

5.2.8.3 Security

To avoid illegally use, there is a password to enter before start the menu, default password is "1234". You should change the password for protection.

Five items in this menu:

- ◆ **SIM password:** Select “On” or “Off” to activate PIN Code or not. Or enter new PIN Code by your own to change the old PIN Code.
- ◆ **Phone Lock:** Select “On” or “Off” to activate phone lock or not. Default password is “1234”. Or enter new Phone Lock Code by your own to Change Code.

 NOTE	Security entry password is same with Phone Lock password.
--	---

- ◆ Phone call barring
 - **Bar incoming:** Bar incoming call(s).
 - **Bar outgoing:** Bar sending call(s).

There are three items here: Barring Local Switch, Barring STD Switch, and Barring ISD Switch.

- ◆ Network

Set any of call bar(s) in the following to promote security, please contact to the service provider for details. The service provider will offer you a 4-digit Network Code to activate Network Call Bar. Press Select to enter in:


- ◆ **Bar foreign Calls:** Bar international call(s).
- ◆ **Only local and home country:** Bar all calls except for home number.
- ◆ **Bar Incoming Calls:** Bar incoming call(s).
- ◆ **Bar Incoming If Abroad:** Bar incoming call(s) overseas.
- ◆ **Bar Outgoing Calls:** Bar sending call(s).

Select any of above-mentioned bar(s), and then scroll to set barring options:

- **All Services:** Bar all services, such as incoming call, voice call, and message, etc.
 - **Voice Calls:** Bar voice call only.
 - **Data:** Bar data only.
 - **Fax:** Bar fax only.
 - **Message:** Bar message only.
 - **All except Msgs:** Bar all services except for message.

After setting bar and service type, you can do as follows:

- ◆ **On:** Activate bar after registration.
- ◆ **Off:** Close the bar.
- ◆ **Status:** Check whether bar is activated or not.
- **Cancel All:** Cancel barring call(s) setting.

 NOTE	Set or cancel network call bar acquires network code offered by the service provider. Three consecutive inputting wrong codes can cause locking of barring service. To unlock, please contact with network provider.
--	--

- ◆ Fixed dialing

This operation needs PIN2 code input. To get the code, please contact the network service supplier.

6. USB DRIVER INSTALLATION



setup
Prolific Technol...

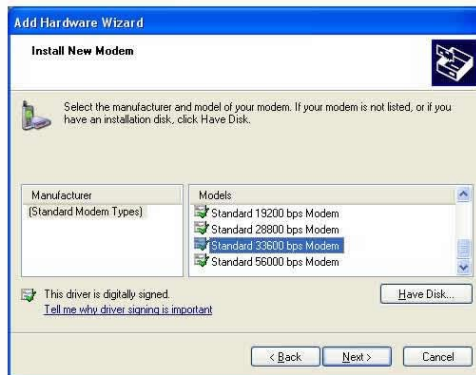
Open 'Setup.exe' and select 'Next'. It will automatically install. After installation please reboot your system.

This function must be support by service providers.

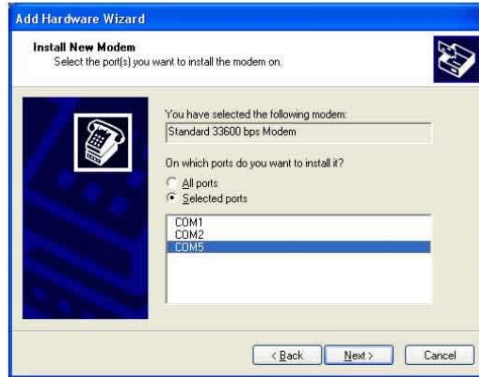
1. Create a standard 33,600 bps Modem on the PC. Select “Control Panel -> Modems”, and then click “Add”.
2. Click “Next”, and select “Don’t detect my modem; I will select it from a list.”



3. Select “Standard Modem Type” as the Manufacturers and “Standard 33600bps Modem” as the Models.



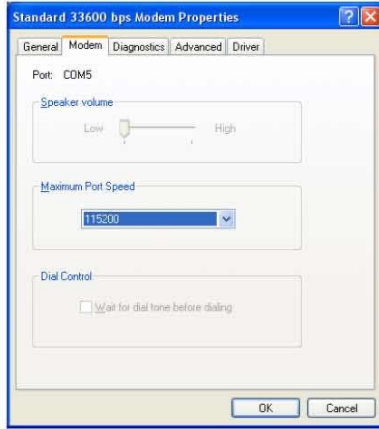
4. Click “Next”, select the Communication Port, for example: COM5.




5. Click "Next" to finish.

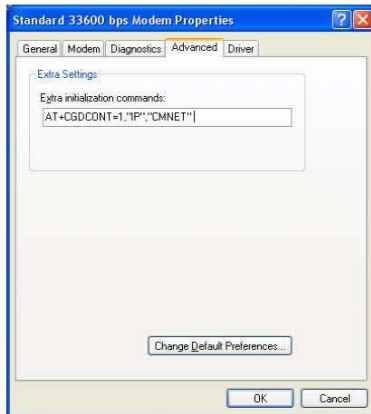


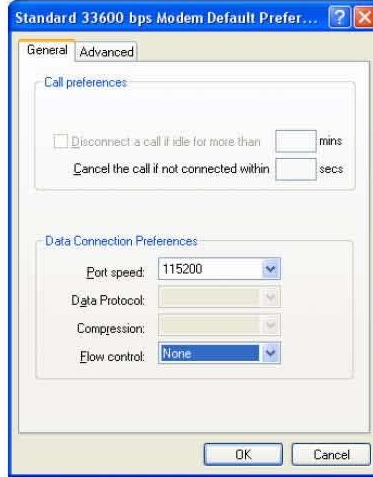
6. Select the newly created Modem in "Modems", as shown in the interface, select "Properties", and then select "Maximum speed" as "115200" in the "General" tab.



- 7. Click "Advanced" tab, add "AT+CGDCONT=1, "IP", "APN" to the Extra setting, and click "Change Default Preferences..", then select "None" in the "Data flow control" tab.

 NOTE	<p>"APN" is Access Point Number of network, the code is different in different countries, please refer to your service provider to get the code.</p>
--	---





8. Create the dial-up network. Enter “Network and Dial-Up Connection”, and double-click “New Connection”.



9. Click "Next", and select "Connect to the network at my workplace".



10. Click "Next", and select "Dial-up Connection" which use a modem and a regular phone line to connect to the internet



11. Click "Next", fill in the company name or the server name which you want to connect



The screenshot shows a Windows-style dialog box titled "New Connection Wizard". The main heading is "Connection Name" with the instruction "Specify a name for this connection to your workplace." Below this, it says "Type a name for this connection in the following box." followed by "Company Name" and a text input field. A note below the field reads: "For example, you could type the name of your workplace or the name of a server you will connect to." At the bottom right, there are three buttons: "< Back", "Next >" (highlighted in yellow), and "Cancel".

12. Click "Next", fill in the phone number, which vary with the areas



The screenshot shows the same "New Connection Wizard" dialog box, but at the "Phone Number to Dial" step. The instruction is "What is the phone number you will use to make this connection?". It asks to "Type the phone number below." and provides a "Phone number:" label above a text input field. A note below the field states: "You might need to include a '1' or the area code, or both. If you are not sure you need the extra numbers, dial the phone number on your telephone. If you hear a modem sound, the number dialed is correct." At the bottom right, there are three buttons: "< Back", "Next >" (highlighted in yellow), and "Cancel".

13. Click “Next” and you will see a “completing the new connection wizard”, you can create a shortcut on your desktop by choose the checkbox. Click the “finish” button to complete the setting.

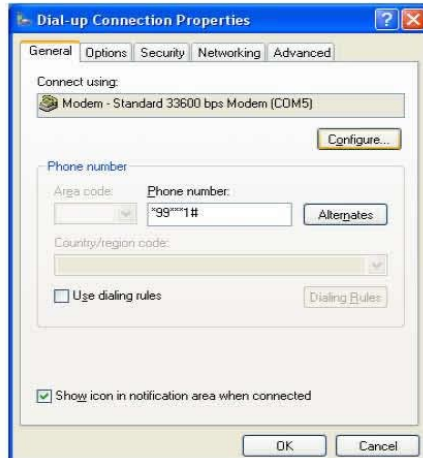


14. Fill in the user name and password.

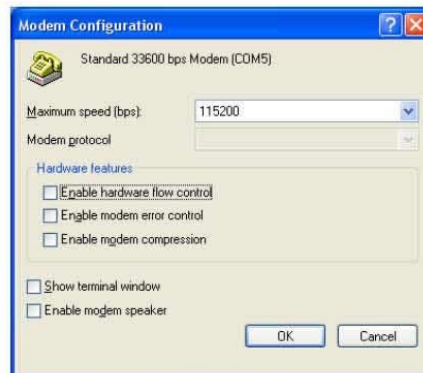


15. Click “Properties” for more setting about the connection

16. Fill in the phone number which you could get from your ISP. Click "Configure" to set the modem's parameters.




17. Choose "115200 bps" for the modem's maximum speed, then click "OK" to finish the setting.



18. Refill the user name and password, click "Dial" to connect to the Internet.



19. Open the web page in IE for Internet access with successful dial-up.

 NOTE	Local service provider should provide the user name and password and connection name, no calling permitted when surfing the Internet.
---	---

APPENDIX I: COMMON TROUBLESHOOTING

Fault	Solution
No dial tone after off-hook	Hook on, and then hook off or press hook
No response in the key system interface (after several attempts)	Power off and then on to try once more
No display in the system interface after disconnection of the external power source	Check whether the battery has electricity, or check whether the battery is damaged, or power on the phone again
No display in the system interface after power-on	Check whether the power source is well connected, or check whether the battery has electricity, and then connect the power source or battery reliably
Display of Searching or No service	The phone currently is not in the service area qualified by the network service provider or the GSM signal is too weak.
No response or incorrect response of the system after pressing Redial/Call key when making a call	There may be problem with the network, please make another attempt; or you must have set an incorrect IP number, local area number or NMC number, etc., by yourself. Please contact the network service provider.
Unable to send the number after	Check whether you have hooked off.

Fault	Solution
pressing Redial/Call key	(Note: Be sure to hook off before sending the number when making a call.)
The system stops sending dialing tone and returns to the main interface 20 seconds after hook-off	Hook on, and then hook off to make a call
Other abnormalities	First refer to the User's Manual, and then check whether the parts such as power source. If there are no such problems, power off and then power on the phone again.



LINKTOP 凌拓

Incase of any problem,
please contact nearest BSNL Customer Service Centre

or

log on to site www.bsnl.co.in for information about BSNL and its services.



LINKTOP 凌拓

GSM Based
Fixed Wireless Phone

Teracom Limited

Teracom House, B-84, Sector 60, Noida-201301, UP, India

Tel: 91.120.3021003, 3021004, 3021005

Fax: 91.120.2585422

<http://teracom.in>

After Sales Support Email:support@teracom.in

Confidential Do not Copy Without permission